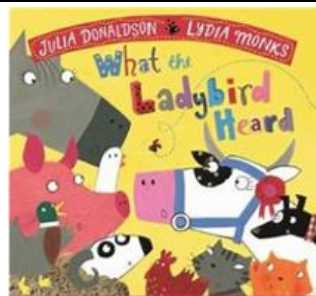


What the Ladybird Heard! Reception 2026

Summer Term 2 2026



St. Barnabas
C of E Primary School

Value of the Term: Thankfulness

Whole School Theme: Discovery, Health & Wellbeing

The children will be reading...

Key Questions:

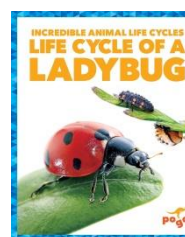
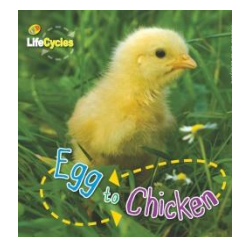
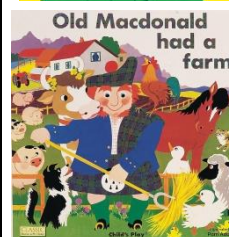
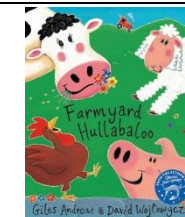
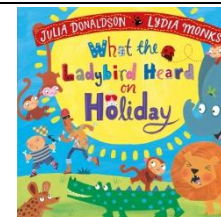
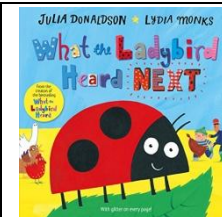
- Which animals are found on the farm?
- Which produce can we get from farm animals and plants?
- Which geographical features can you see on a farm?
- Can you make your own farm map?
- What are the similarities between farms now and in the past?

Oracy

There will be many daily chances to talk and listen.

We will be given opportunities to:

- To ask questions
- To gather information
- Recall information



Reading

Children will...

- talk about our main text of 'What the Ladybird Heard'. Role play and retell using props and creating their own stories.
- listen and interact with lots of farm-based stories, poems, rhymes and non-fiction books.
- use new vocabulary, including 'Word Aware' concepts and topic 'Word of the Week'.
- develop phonic reading skills in our RWI work.

Writing

Children will...

- practise writing words using 'special friends' and 'digraphs' in RWI lessons and in their own writing.
- think of their own ideas to write sentences.
- write sentences using a range of genre including: facts, descriptions, recounts and imaginary work.

Maths

Children will ...

- halve and double with different amounts of objects.
- explore grouping and sharing.
- understand odd and even numbers when sharing.
- create their own rules for patterns.
- identify units of pattern.
- describe positions. front, behind, above.
- explore mapping.
- write with correct number formation.
- addition and subtraction.

Physical Development

Children will learn to:

- develop the control needed for writing letters with the correct formation and fine motor activities.
- develop their gross motor skills through outdoor play, climbing frame, bikes and scooters, large equipment.
- develop their core strength and gross motor skills through our PE Games unit.

Important dates in Reception

- Farm Trip: Thursday 24^h June
- Sports Day: Friday 26th June (pm)
- World Week: 22nd - 26th June.
- School Disco: Friday 10th July

Welly Walks:

We will send a Parent Mail to let you know when your child will need their wellies/ waterproof coats for each session.



Understanding the World

Children will learn to:

- discuss farm machinery, old and new.
- identify and discuss what is the same and what is different in our local environment and on the farm.
- identify that some food comes from other places in the world and why.

Computing/ICT: Introducing data handling

- sort and categorize.
- introduction to branching database.
- exploring pictograms.

PSHE/Thrive/British Value

P.S.H.E: Managing Self: My Wellbeing

Children will learn how to look after their wellbeing through exercise, meditation, a balanced diet and care for themselves.

British Values: Listen to and respect other people's opinions and values.



Thrive: take steps to resolve conflicts with other children and compromise.



Expressive Arts and Design

Children will learn to:

- design and create models and images of a variety of farmyard animals and machinery using a range of media and techniques.
- sing songs and develop their musical expression.

Reminders:-

- All children will bring home a school reading book, which is matched to their phonics ability, and a 'sharing book'. The children will be given the opportunity to change these daily, if required. **Please try to read together every night and sign the reading diary. Go through the RWI book and practise the sounds taught so far.**
- Please name **all** clothing, shoes and water bottles. We have lots of un-named items in our lost property box if you have lost anything.

Religious Education

What places are special and why?

- Which places are special to you?
- Looking at special places around the world.