

# What the Ladybird Heard! Reception 2025

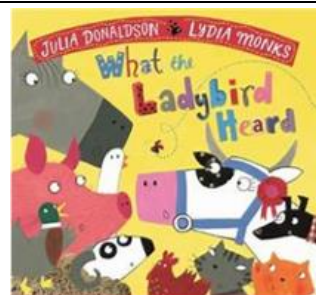
**Summer Term 2 2025**

**Value of the Term: Thankfulness**

**Whole School Theme: Discovery, Health & Wellbeing**

**Key Questions:-**

- Which animals are found on the farm?
- Which produce can we get from farm animals and plants?
- Which geographical features can you see on a farm?
- Can you make your own farm map?
- What are the similarities between farms now and in the past?



## Oracy

Linking to our World Week topic of Rivers we will be having a visit from the RNLI to hear about water safety.

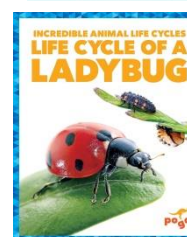
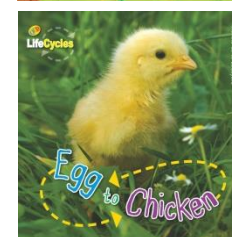
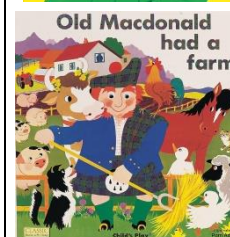
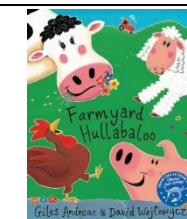
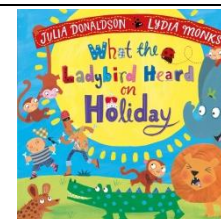
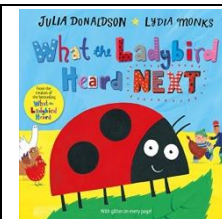
As part of this we will be given opportunities to: -

- To ask questions
- To gather information
- Recall information



**St Barnabas**  
C of E Primary School

**The children will be reading...**



## Reading

**Children will...**

- talk about our main text of 'What the Ladybird Heard'. Role play and retells using props and creating their own stories.
- listen and interact with lots of farm-based stories, poems, rhymes and non-fiction books.
- use new vocabulary, including 'Word Aware' concepts and topic 'Word of the Week'.
- develop phonic skills in our RWI work.

## Writing

**Children will...**

- practise writing words using 'special friends' and 'digraphs' in RWI lessons and in their own writing.
- think of their own ideas to write sentences.
- write sentences using a range of genre including: - facts, descriptions, recounts and imaginary work.

## Maths

**Children will ...**

- halve and double with different amounts of objects.
- explore grouping.
- understand odd and even numbers when sharing.
- create their own rules for patterns.
- identify units of pattern.
- describe positions. front, behind, above.
- explore mapping.
- write with correct number formation.
- Addition and subtraction.

## Physical Development

### Children will learn to:

- develop the control needed for writing letters with the correct formation and fine motor activities.
- develop their gross motor skills through outdoor play, climbing frame, bikes and scooters, large equipment.
- develop their gross motor skills through our PE Games unit.

## Important dates in Reception

- Farm Trip: Thursday 12<sup>th</sup> June
- Sports Day : Friday 20<sup>th</sup> June (pm)
- Ising Pop concerts:- Thursday 26<sup>th</sup> June (pm)
- World Week: 23<sup>th</sup>- 27<sup>th</sup> June.
- School Disco: Friday 27<sup>th</sup>

### Welly Walks:

We will send a Parent Mail when your child will need their wellies/ waterproof coats for each session.



## Understanding the World

### Children will learn to:

- discuss farm machinery, old and new.
- identify and discuss similarities and differences of geographical features of our local environment and on the farm.
- identify that some food comes from other places in the world and why.

### Computing/ICT: Introducing data handling

- sort and categorize.
- introduction to branching database.
- exploring pictograms.

## PSHE/Thrive/British Value

### P.S.H.E: Managing Self: My Wellbeing

Children will learn how to look after their wellbeing through exercise, meditation, a balanced diet and care for themselves.

**British Values:** Listen to and respect other people's opinions and values.



**Thrive:** take steps to resolve conflicts with other children and compromise.



## Expressive Arts and Design

### Children will learn to:

- design and create models and images of a variety of farmyard animals and machinery using a range of media and techniques.
- sing songs and develop their musical expression.

### Reminders:-

- All children will bring home a school reading book, which is matched to their phonics ability, and a 'sharing book'. The children will be given the opportunity to change these daily, if required.  
**Please try to read together every night and sign the reading diary. Go through the RWI book and practise the sounds taught so far.**
- Please name all clothing, shoes and water bottles. We have lots of un-named items in our lost property box if you have lost anything.

## Religious Education

### What times and stories are special and why?

- How do people make celebrations special?
- What special times do other people celebrate?
- Special religious times of the year.